



ANPR Cameras & Software

RoboPLATE
ANPR Cameras & Software

... Automatic Number Plate Recognition



New!



ROBOPCZ22
Compact Eyeball
ANPR Camera



ROBOPMZ50
PowerZoom Bullet
ANPR Camera

- ✓ **StandAlone**
ANPR CCTV Cameras
- ✓ **Extracts**
Number Plate Data
- ✓ **Compares to**
White/Grey/Black List
- ✓ **Triggers**
Actions or Notifications
- ✓ **Add-on**
Software & Accessories



RoboPlate
a great British brand
from System Q Ltd



ROBOPL4TE



What is ANPR ?

(Automatic Number Plate Recognition)

Automatic Number Plate Recognition, also known as ANPR is often thought of as technology commonly used by traffic police or parking management companies but the new RoboPlate line of ANPR cameras and additional software is affordable and (now) available to business, property and home owners.

You probably know it as the technology that traffic police use to alert them to a suspect vehicle or to capture a speeding driver for example. You might be aware that it is used in most modern car parks to clock the time spent on site, triggering an automatic barrier to lift or a gate to open when a vehicle leaves. But with the right set-up, ANPR can do so much more, for so many more!



The RoboPLATE® ANPR Story

3 Years in the Making!

Responding to customer requests for more affordable ANPR products, System Q have answered the call with 2 very competitive CCTV cameras that capture number plates as a self contained solution with no NVR needed. We've even developed an advanced software for enterprise users of ANPR.

Our compact Eyeball ANPR camera being the first in the world in a popular eyeball case is perfect for low level mounting on gateposts or similar.

Our PowerZoom Bullet ANPR Camera in traditional housing is a wider and longer range camera ideal for further distances.

Together with a low-cost widget and a dynamic add-on software written especially for RoboPlate by System Q, ANPR is now both affordable and attainable.

Bespoke ANPR software
written here in the UK





ROBOPMZ50
pg.10

ROBOPCZ22
pg.8

RoboPLATE[®]
ANPR Cameras & Software

Example
Uses
on pg.19

- ✓ Self-Contained Solution
- ✓ No NVR Required
- ✓ 2 models - Eyeball/Bullet
- ✓ Black/white/grey lists
- ✓ Acts as a normal IP camera
- ✓ Additional Software Available



LAN Relay

Use the LAN relay feature to trigger a network relay device ...



REL019 (pg.31)



Barriers,
Doors,
Lights ...



Smart FTP

Use the camera's smart FTP function to upload captures to an FTP server or use the RegWatch FTP Server ...



RegWatch FTP Server

... when plate data is captured ...



Features:

- ✓ Saves to Desktop
- ✓ Thumbnail Results
- ✓ Reg in Filename
- ✓ For Windows PC

Optional Extra
SOFT1042 pg.14

Remote Monitoring



Email Alerts

Get email notifications of a number plate match to one of your lists on your desktop or mobile phone.



Browser Log In

Login to your RoboPLATE ANPR camera using the web browser. See live images & captured records and edit settings.



Command Centre

Ideal for enterprise users, it adds extra functionality to your ANPR CCTV system (see opposite page).

RoboPLATE ANPR

PLATE02 catches

Processes live video feed within the camera producing Number Plate data.

RoboPLATE ANPR

PLATE02 matches

Compares with built-in Black / White / Grey lists to find a match.

RoboPLATE ANPR

PLATE02 attaches

Saves number plates to an on-board SD card or PC via software.



Alarm Output

A low voltage 3.3V TTL relay can interface with third party equipment or a Handy Rascal relay.

Handy Rascal
OPTO Isolating
Relay
HRM100 (pg.31)



Audio Output

A preselected message is triggered on a successful list match.

16 free message files at
RoboPLATE.com



RS485 Output

A successful list match can trigger an RS485 command to activate a PTZ tour or a VoiceOFF device.



VoiceOFF RS485 activated
MP3 message player
VOX400 (pg.31)



Software Add-ons

ANPR Command Centre Software



Optional Extra
SOFT1045 pg.16-17

- ✓ Create additional lists
- ✓ Add extra vehicle & driver data
- ✓ Enhanced Scheduling
- ✓ Easy searching of number plate data
- ✓ Export data for manager/police use
- ✓ Uses NetSend to trigger LAN relays
- ✓ Opens gates, barriers, bollards or turn on lights, sirens etc.



RegWatch Desktop Widget

An instant pop-up notification straight to your PC screen when a white, grey, black list match occurs !

Optional Extra
SOFT1046 pg.14

Add ons ... (full list pg.29)



Relays
pg.31



Key Fobs
pg.30



Message
Players pg.31



Cable
pg.32



Connectors
pg.32



Exit Buttons
pg.30



Switches
pg.32



NVRs
pg.33



RoboPlate.com



info@RoboPlate.com

CONTENTS

Products

Eyeball ANPR Camera	8
Bullet ANPR Camera	10

Software	13
----------	----

Applications	19
--------------	----

Technical Spec	25
----------------	----

Accessories	29
-------------	----

Ask the Expert	34
----------------	----





6-22mm ANPR Eyeball
Order Code: ROBOPCZ22

**Best Value
in the UK!**

RoboPLATE

Low cost Compact ANPR camera

*... use vehicle registrations
to open gates, trigger
alarms or send alerts !*

**Perfect for
Gate Posts**

**In stock
Now !!**

- ✓ Captures Number Plates
- ✓ Extracts Plate Data
- ✓ Stores Plate Data
- ✓ No NVR Needed
- ✓ No Software Needed
- ✓ IP CCTV Cameras
- ✓ Superb Image Quality
- ✓ Black-White-Grey List

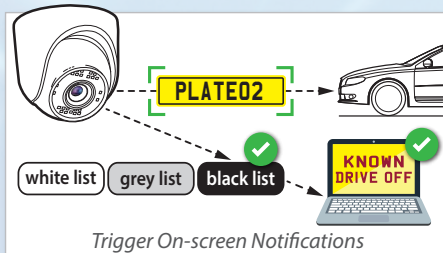
- ✓ Compact Eyeball 6-22mm
- ✓ Built In Mic
- ✓ Software Add-On
- ✓ Sends Pop-Up Messages
- ✓ Self Contained Solution
- ✓ Alarm Output
- ✓ Sends Emails
- ✓ Triggers Relays

- ✓ NetSend LAN Triggers
- ✓ ONVIF Protocol
- ✓ IP66
- ✓ IR Illuminator
- ✓ RS485 Output
- ✓ Audio In/Out
- ✓ Bullet Option 5-50mm
(pg.10)

The new RoboPlate ANPR cameras can be used as part of a CCTV System or as a complete self contained stand-alone solution to capture and record vehicle registrations and trigger events such as opening gates based on number plate matches.

The RoboPlate compact eyeball ANPR camera has been designed for mounting lower down on gate posts or entrance walls. A great choice for drive and gate entrances where a traditional style camera would stick out and could get damaged or vandalised. It contains the same electronics as the larger traditional design but includes a built in microphone for picking up speech at the lower mounting position and has a smaller zoom lens to fit in the compact case. The combination of the smaller case and lower cost lens make the Eyeball RoboPlate ANPR camera the lower cost of the two.

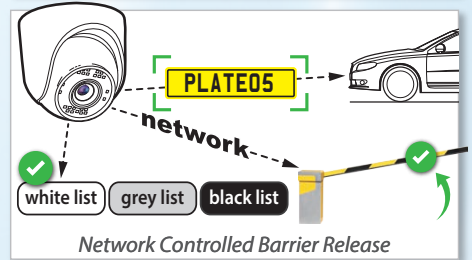
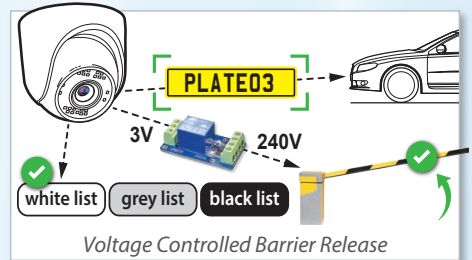
Completely self contained the RoboPlate ANPR cameras don't need an NVR or any additional software to capture number plate data, add it to its built in black/white/grey list and then use it to open gates and trigger alarms etc.



The cameras can be set up by using a computer or tablet to connect to their built in web-browser interface where you can set up how it functions and add data to its built in black, white and grey list of number plates. (See pg.15 for tip)

The RoboPlate cameras have a built in low voltage output relay (3.3V TTL) that can be used to interface with other equipment such as an automated barrier, or you can use its unique NetSend function to control other equipment such as reworkable relays. Networked relays have the huge advantage they don't need a direct connection to the camera but simply need to be on the same network. Both types can be triggered subject to licence plate detection. Triggering can take place for every combination of a black, white or unlisted plate.

The NetSend functionality also allows the camera to send pop up messages to computers and for example it could alert a Petrol Station manager that a known "drive-off" has pulled on to the forecourt. Or it could inform a business owner that a VIP customer has pulled into the car park.



The RoboPlate ANPR cameras are based on ONVIF protocol so they can be used as a standard IP camera and most NVRs will be able to record the live video from them.

The cameras themselves have basic ANPR functions but for power users of ANPR equipment we have written our own software program called ANPR COMMAND CENTRE. This software makes it easy for the user to have more than the three black, white and grey lists and create as many as they want to trigger various actions.



SOFT1045
pg.16

- Vehicle Database and Management
- Add extra lists – VIP, Staff etc.
- Vehicle Groups
- Group Scheduling
- Windows® Based
- Open Barriers & Gates
- Trigger Network Relays
- Audio & Visual Notifications
- Send Emails
- Trigger VoiceOff Announcements

EYEBALL SPECIFICATION

6-22mm Motorised Lens
2MP Resolution
1 Alarm Output
NetSend LAN Triggers
ONVIF Protocol
Built In Mic
IP66 For External Use
Up to 35M IR Range
RS485 Output
Audio In/Out
Ø120mm x (H) 110mm
Internal Micro SD Card included
Full spec on pg.27

Order Codes

Code	Description
ROBOPCZ22	ANPR Compact Eyeball Camera 6-22mm Lens

New!

Add-ons



Extra Deep Base
... for ANPR eyeball
BKT301W



ANPR Command Centre Software
... for Enterprise Users
SOFT1045
See pg.16



RoboPlate.com



info@RoboPlate.com



5-50mm ANPR Bullet
Order Code: ROBOPMZ50

**In stock
Now!!**

RoboPLATE

PowerZoom ANPR camera

*... use vehicle registrations
to open gates, trigger
alarms or send alerts !*

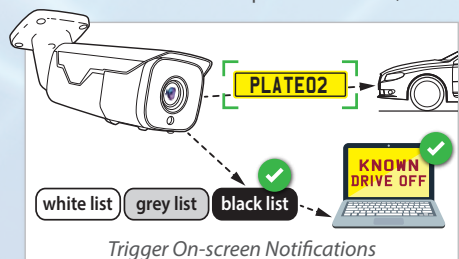
**PowerZoom
5-50mm**

- ✓ Captures Number Plates
- ✓ Extracts Plate Data
- ✓ Stores Plate Data
- ✓ No NVR Needed
- ✓ No Software Needed
- ✓ IP CCTV Cameras
- ✓ Superb Image Quality
- ✓ Black-White-Grey List
- ✓ Biggest Optical Range
- ✓ Software Add-On
- ✓ Sends Pop-Up Messages
- ✓ Self Contained Solution
- ✓ Alarm Output
- ✓ Sends Emails
- ✓ Triggers Relays
- ✓ NetSend LAN Triggers
- ✓ ONVIF Protocol
- ✓ IP66
- ✓ IR Illuminator
- ✓ RS485 Output
- ✓ Audio In/Out

The new RoboPlate ANPR cameras can be used as part of a CCTV System or as a complete self contained stand-alone solution to capture and record vehicle registrations and trigger events such as opening gates based on number plate matches.

The traditional bullet design RoboPlate ANPR camera has an industry leading 5-50mm power zoom lens, this is a much more powerful lens than many of its competitors. The wide angle 5-50mm zoom make it extremely versatile for detecting and recognising car number plates in a wide range of applications. The ability to capture number plates at a greater distance than the eyeball make it useful for mounting in a higher position whilst maintaining an optimum capture angle (pg.27). This camera is often used on petrol forecourts, and to monitor distant entrances.

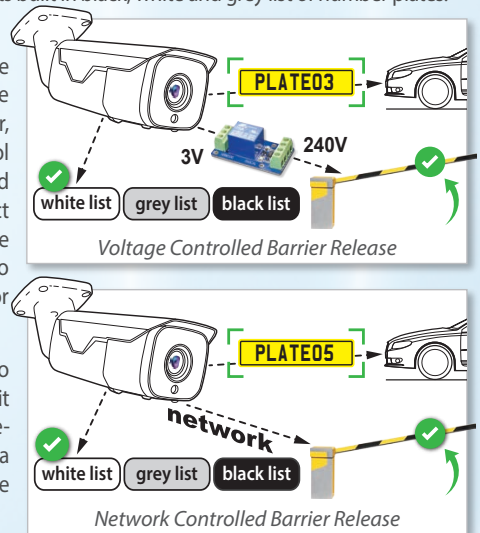
Completely self contained the RoboPlate ANPR cameras don't need an NVR or any additional software to capture number plate data, add it to its built in black/white/grey list and then use it to open gates and trigger alarms etc.



The cameras can be set up by using a computer or tablet to connect to their built in web-browser interface where you can set up how it functions and add data to its built in black, white and grey list of number plates. (See pg.15 for tip)

The RoboPlate cameras have a built in low voltage output relay (3.3V TTL) that can be used to interface with other equipment such as an automated barrier, or you can use its unique NetSend function to control other equipment such as reworkable relays. Networked relays have the huge advantage they don't need a direct connection to the camera but simply need to be on the same network. Both types can be triggered subject to licence plate detection. Triggering can take place for every combination of a black, white or unlisted plate.

The NetSend functionality also allows the camera to send pop up messages to computers and for example it could alert a Petrol Station manager that a known "drive-off" has pulled on to the forecourt. Or it could inform a business owner that a VIP customer has pulled into the car park.



The RoboPlate ANPR cameras are based on ONVIF protocol so they can be used as a standard IP camera and most NVRs will be able to record the live video from them.

The cameras themselves have basic ANPR functions but for power users of ANPR equipment we have written our own software program called ANPR COMMAND CENTRE. This software makes it easy for the user to have more than the three black, white and grey lists and create as many as they want to trigger various actions.



SOFT1045
pg.16

- Vehicle Database and Management
- Add extra lists – VIP, Staff etc.
- Vehicle Groups
- Group Scheduling
- Windows® Based
- Open Barriers & Gates
- Trigger Network Relays
- Audio & Visual Notifications
- Send Emails
- Trigger VoiceOff Announcements

BULLET SPECIFICATION

5-50mm Motorised Lens
2MP Resolution
1 Alarm Output
NetSend LAN Triggers
ONVIF Protocol
IP66 For External Use
Up to 65M IR Range
RS485 Output
Audio In/Out
(H) 83 x (W) 98 x (D) 176mm
Internal Micro SD Card included
Full spec on pg.27

Order Codes

Code	Description
ROBOPMZ50	ANPR Traditional Bullet Camera 5-50mm Lens

**Best Value
in the UK!**

Add-ons



RegWatch Desktop Widget
... live image & pop up on
PC screen

SOFT1046 - See pg.14



Extra Deep Base
... for ANPR bullet

BKT300W

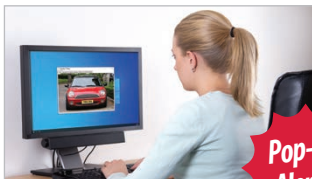


RoboPlate.com

info@RoboPlate.com

CONTENTS**Software (ANPR CCTV)**

RegWatch Widget	14
FTP Server	14
ANPR Command Centre	15-17



RoboPlate RegWatch Widget

Get Instant Pop Up Notifications of an ANPR List Match on your PC Screen

- Great Add On
- Instant Pop Up Notification
- View Live Video
- Audio Notification
- Windows Toolbar Notification
- PC Compatible
- Works with RoboPlate ANPR Cameras

If you want the RoboPlate camera to send pop up messages over a network when it gets a match, we've also written a simple widget. You'll need to install it on a PC and when the camera detects a number plate the window will pop up on the screen showing the live video stream on your PC, an audio file can be played and a windows notification received with a simple text message too.

SYSTEM REQUIREMENTS
Windows 7 or later
Network Connection
1 per work station

Order Code	Qty
SOFT1046	RoboPlate RegWatch Widget

Low Cost Widget



RoboPlate FTP Server

Save your Number Plate captures straight from ANPR camera to your PC Desktop

- Works with RoboPlate ANPR Cameras
- Stores Plate Captures
- Saves Plate Data to your PC
- Thumbnail Results
- Easy to Browse Image Files
- Files as White, Grey or Black List
- Plate Data Stored in the File Name
- Windows PC Compatible

RoboPlate cameras have file transfer capability built in, they are able to send ANPR results in the form of a .jpg image to an FTP server.

We have written an easy-to-use RoboPlate specific FTP server capable of receiving those images and filing them on a per-camera basis. A Windows®-embedded file browser allows the operator to navigate the received files, viewing them in various ways: large or small icons/thumbnails, details or list view.

The files are intuitively named by list type (B/W/G) and dated for easy sorting and location. They are stored in dated folders making file maintenance very easy.

SYSTEM REQUIREMENTS
Windows 7 or later
Internet Connection

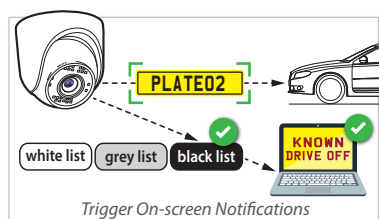
Order Code	Qty
SOFT1044	RoboPlate FTP Server

Handy Add-On

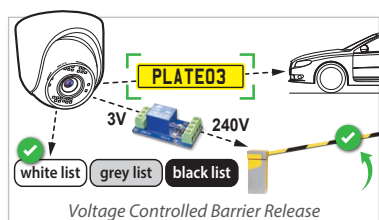


What is the RoboPlate NetSEND feature?

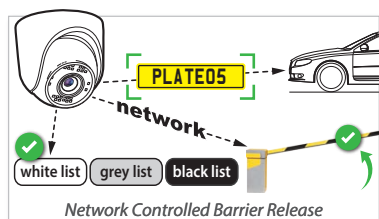
The RoboPlate ANPR cameras can capture and save number plate data in real time, they can do this without needing any additional software or NVR. You can view and configure these cameras via a built-in web interface using a Windows PC and a web browser such as Chrome, Firefox or Opera.



You can maintain black and white lists with known registration plates and configure what action(s) should be performed subject to a result being obtained. Different actions can result from a plate matched against the black, white, or 'grey' list. All unknown vehicles (ie: not specified in the black or white list) are considered to be in a 'grey' list and are handled in a similar manner.



For example, on matching a number plate to a white list the camera could trigger a relay using its 3v output, this in turn could be used to open your gate or a barrier, a black list match might be used to turn on a warning light or sounder, an unknown vehicle might result in an email notification.



The RoboPlate camera's built in NetSEND function allows you to specify an ASCII command that it can deliver to a network attached device. Typically this would be an Ethernet relay or access control product but could be any device listening on the IP address and port number that you specify. Up to three devices may be defined, one for each list: black/white/grey.

If you want to add even more advanced options please have a look at our ANPR Command Centre Software on page 16.





RoboPlate ANPR Command Centre Software

Manage, control and organise your ANPR cameras & database with our powerful desktop software

**Feature
Packed!**

- Vehicle Database and Management
- Add extra lists – VIP, Staff etc.
- Vehicle Groups
- Group Scheduling
- Windows® Based
- Open Barriers & Gates
- Trigger Network Relays
- Audio & Visual Notifications
- Send Emails
- Trigger VoiceOff Announcements

This comprehensive Windows® software expands the RoboPlate camera built-in functions by adding additional lists, actions, more detailed vehicle records, vehicle groups and more flexible scheduling. It makes administering and using the RoboPlate cameras easier and more friendly using software rather than the camera's web browsers.

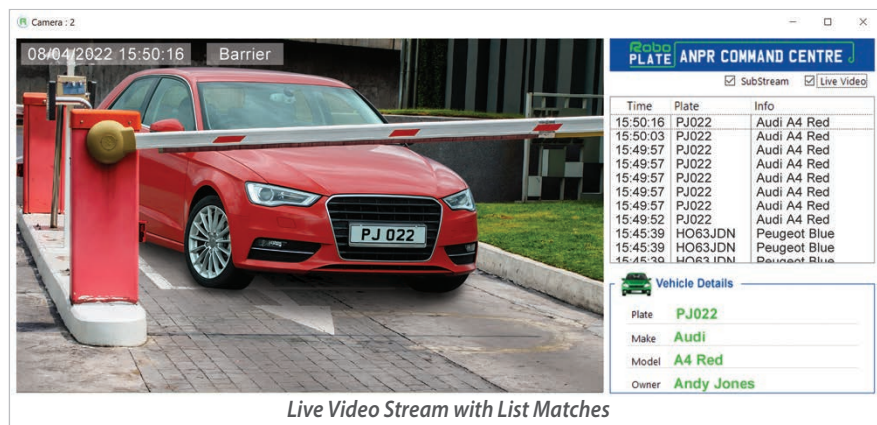
How it Works

The software receives recognition results and full frame images from the ANPR cameras via the network and files these in a database for future retrieval.

It checks those results against its vehicle database and, subject to a successful match, can automatically generate network triggers, emails, audio and visual notifications.

Multiple Cameras

The Command Centre software can receive results from up to 4 cameras simultaneously. A live video feed is normally displayed for the operator but this can be switched off if not needed or when unattended.



Live Video Stream with List Matches

Groups, Group Memberships and Scheduling

The software supports vehicle groups, named in a friendly manner these help categorise particular vehicles, you may for example have groups for normal staff, security staff, VIPs or contractors. For maximum flexibility, vehicles may be a member of multiple groups.

Available Groups										
Description	Time Span		Active Day							Camera 1
	Start	End	M	T	W	T	F	S	S	
All Day - Every Day	00:00:00	23:59:59	Y	Y	Y	Y	Y	Y	Y	Popups Blacklist
Blacklist Group	00:00:00	23:59:59	Y	Y	Y	Y	Y	Y	Y	
VIP Group	09:00:00	13:00:00	Y	Y						
Staff Open Gate	07:00:00	17:45:00	Y	Y	Y	Y	Y			

Advanced Group Membership

A schedule can be applied to each group specifying an active time period for specific days of the week. Subject to this schedule any of the defined actions may be triggered to happen.

Vehicle Records

Day to day admin of vehicle registrations is made into an easy task for operators by using a familiar Windows interface and additional information such as vehicle make, model, colour, owner can all be appended to the record. These details are displayed on-screen when a match is detected too. Lists can be maintained using a simple upload facility.

Database Search

The Command Centre software has extensive search facilities by date, owner or (partial) plate with a snapshot captured that can be saved for later use.



Stores Extra Data

Subject to Detection Actions

A powerful aspect of this software is the ability to perform immediate, or delayed actions subject to detection of a particular registration plate including:

- Audio & Visual notification via the PC
- Email
- Audio announcement via a networked VoiceOFF (pg.31)
- Triggering of a network attached relay (pg.31)



Barriers

Summary

A great solution for Enterprise users offering additional list membership, advanced scheduling, easy database searching, powerful relay triggering and comprehensive report outputs.

SYSTEM REQUIREMENTS

- Windows 7 or later
- LAN or Internet Connection
- Max 5 logins per camera
- * Data Storage depends on PC



Scan here for the software manual at systemq.com

Order Code

SOFT1045

Qty

RoboPlate ANPR Command Centre Software

Ideal for Busy Sites

Add-ons



RoboPlate® ANPR Compact Eyeball Camera
6-22mm Lens !

ROBOPCZ22

See pg.8



RoboPlate® ANPR Traditional Bullet Camera
5-50mm Lens !

ROBOPMZ50

See pg.10



RoboPlate.com



info@RoboPlate.com

CONTENTS

Applications

• Petrol Stations	20
• Nurseries, Care & Residential Homes	21
• Farms, Estates and Houses	21
• Sports & Health Clubs	21
• Caravan Parks	22
• Customer Only Parking	23
• Hotels & Spas	23
• Construction Sites	23



Ideal for Petrol Station Forecourts



Petrol Stations

Garages with petrol pumps continually run the risk of drivers filling up and driving off without paying. This might happen once but with RoboPlate ANPR you can help prevent it happening again by alerting the kiosk attendant that a "Known drive off" has just pulled up.

A typical scenario...



... more Security Applications

RoboPlate is an affordable ANPR solution suitable for any property looking to monitor, record and, if required, control vehicle access or driver behaviour. It's a great solution for:



Care Homes, Nurseries & Residential Homes

An ideal for solution for businesses caring for the vulnerable making it easy to monitor guests arriving in vehicles. Staff can add family and friends or approved visitors lists to their white list and be alerted upon their arrival. More importantly they can be notified when unknown vehicles are loitering in the area.



Farms, Estates and Houses in remote locations

RoboPlate ANPR provides a great log of any vehicle visiting, making a delivery or driving through a private property. The easy to upload white and black lists make it easy to identify a number plate and allocate it to either list. The grey list means you can save the details for a later date, especially if suspicious behaviour is detected.



Golf, Tennis & Other Sports & Health Clubs

RoboPlate ANPR cameras can also be used to personally welcome your guests. Members would undoubtedly be impressed by the hospitality staff at their local club welcoming them by name as they walk through the door - just by ANPR matching their number plate as their car enters the car park.

A great access control solution for Caravan Parks

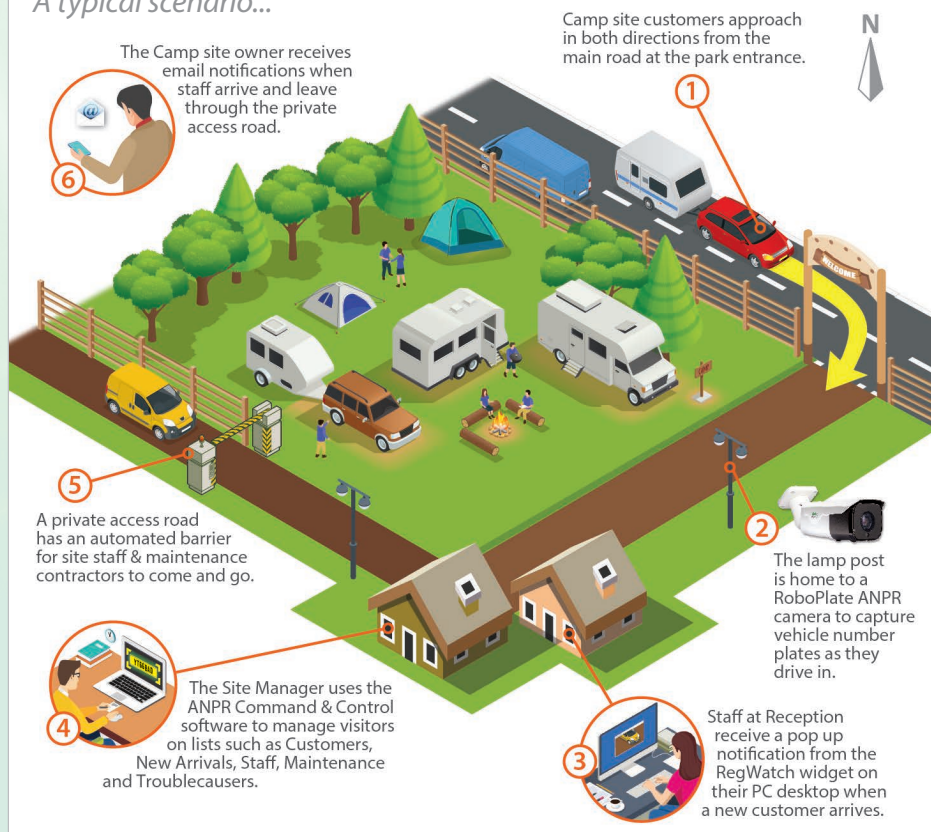


Caravan Parks

Caravan Site owners can monitor all vehicle comings and goings using RoboPlate ANPR cameras.

They can greet new arrivals as well as keeping their guests secure from unwanted visitors

A typical scenario...



... more Access Control Applications

Using RoboPlate ANPR cameras is a great way to control access to sites and ensure permitted only use of private property.

Control gates!



Customer Only Parking

Solicitors, accountants, doctors, dentists and other professionals can protect their busy town centre parking spaces using RoboPlate ANPR cameras. Using the low-cost RegWatch widget, a receptionist can be alerted on their PC desktop that an unknown driver has entered their premium parking spots and go out to check the vehicle credentials. Customers and staff can all be added to the white list to save time in the future.



Hotels & Spas

Ensure client-only parking by reserving spaces for your customers. Instead of employing a gatekeeper or parking attendant, a gate or barrier can be linked to the reception desk restricting access to known guests or sending a message that a VIP has arrived. Imagine how impressed your customers would be when you greet them by name following a white list notification!



Construction Sites

Save employee's time and employer's money by restricting access to construction vehicles only, or increase safety by playing an audio message warning visitors of site vehicles in the area. Cost effective security plus health & safety providing you peace of mind, thanks to RoboPlate ANPR.

Perfect for any property with Electronic Gates, Barriers or Bollards Protecting Access...



Electronic Gates



Barriers



Bollards

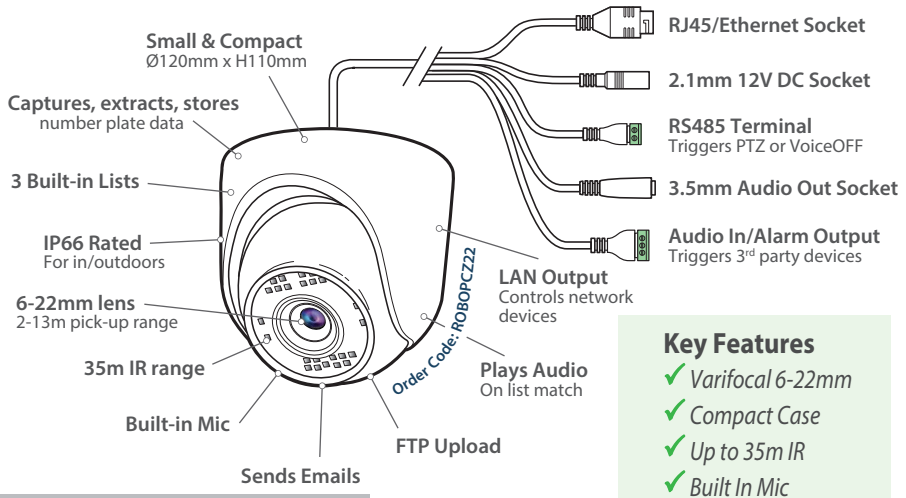
CONTENTS

Technical Spec

Features	26
Installation	27

World's 1st
ANPR
Eyeball

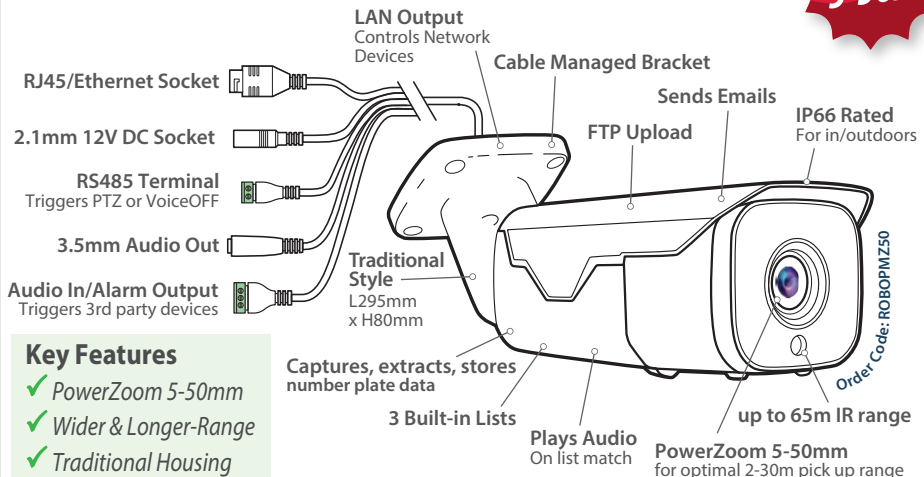
Compact 6-22mm ANPR Eyeball Design



Optimal distance 2-13m

PowerZoom 5-50mm ANPR Bullet Design

**PowerZoom
5-50mm**



Optimal distance 10-30m

TECHNICAL SPECIFICATION

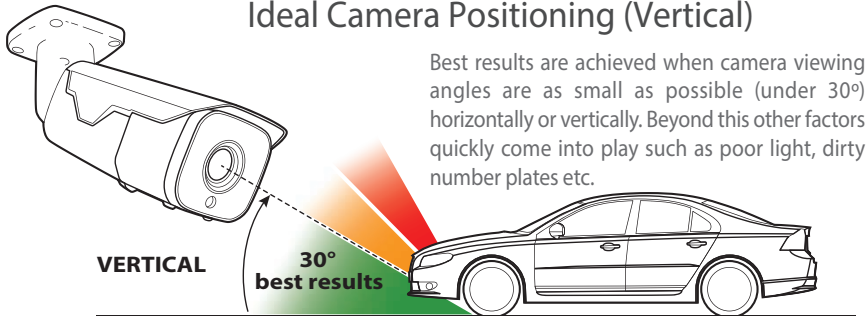
Resolution 2MP (1920 x 1080)
 Built-in White/Grey/Black lists
 Compression H.264 \ H.264
 Day/Night Function Mechanical
 (True Day/Night)
 IR Illuminator Built-in
 RJ45/Ethernet Socket
 3.3V TTL Built-in Alarm Outputs 1 (Screw Terminal)
 1 Audio Input (Screw Terminal)
 1 Audio Output (3.5mm Audio Socket)

Network Connection NetSend LAN Triggers
 ONVIF Compatible
 Protocols: TCP/IP, HTTP, DHCP, DNS, DDNS
 RTSP, SMTP, NTP, UpnP, FTP
 User Logins 5 Max (Simultaneous)
 RS485 Output Screw Terminals
 Wide Dynamic Range
 Dual Voltage 12V DC / PoE (48V)
 Consumption 500mA
 IP66 for External Use

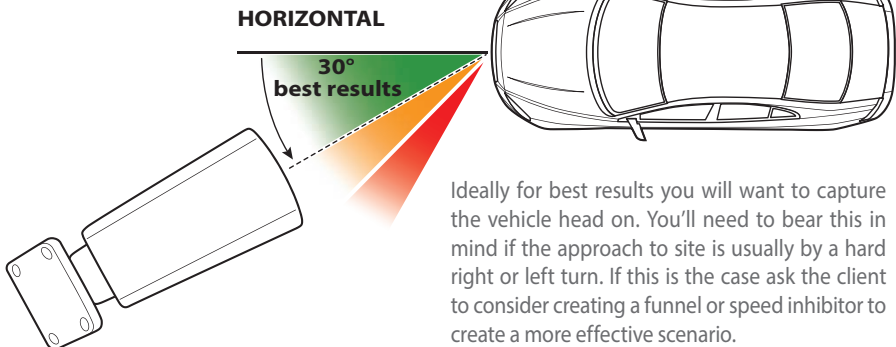


RoboPlate

Ideal Camera Positioning (Vertical)



Ideal Camera Positioning (Horizontal)



CONTENTS

Accessories

Exit Buttons	30
Keyfob Kits	30
Relays	31
VoiceOFF	31
CAT5e Cables	32
Connectors	32
Network Leads	32
Switches	32
Non-PoE NVRs	33
PoE NVRs	33



Stainless Steel Designer Exit Buttons

- Designer Range
- Stainless Front
- Button Options
- 0.5-1A 12V DC
- UK 1 Gang Size
- NO-NC Contacts
- Momentary Action
- Illuminated Option
- Recess or Flush

These attractive exit buttons have a choice of different button options. The classic green and red buttons are made of anodised aluminium for a quality feel and look.

SPECIFICATION

NO/NC/COM Terminals
LED Colour (ACC063):
Idle - Blue / Active - Green
0.5-1A 12V DC
IP65 Waterproof
86 x 86 x 42mm

4
Button
Options!



ACC060



ACC062



ACC063

The ACC063 features an illuminated button so you can see it in low light and the ACC062 is a simple discreet Press to Exit button in a modern minimalist design. They have screw hole centres to fit standard UK back boxes. If you are not fitting these into a flush mount back box we recommend purchasing our ACC005 or ACC020 surface mounting boxes.

Code	Description
ACC060	Green Button
ACC061	Red Button
ACC062	Silver Button
ACC063	Silver LED Button
ACC020	Surface Box Green Polycarb. - D30mm
ACC005	42mm Alloy Surface Box

**4 Button
Options**

**UK
1-gang
size**

**Great
Value!**

Wireless Key Fob & Key Pad Solution

... easy, low cost, flexible & fast to fit !



1, 2, 3 or 4 button fobs in black or white.

Black Code	White Code	Description
WIR301B	WIR301W	1 Ch Key Fob TX
WIR302B	WIR302W	2 Ch Key Fob TX
WIR303B	WIR303W	3 Ch Key Fob TX
WIR304B	WIR304W	4 Ch Key Fob TX

**50m
Range**



Wireless 2ch keypads -use as an alternative or in addition to a key fob to trigger the RX. Battery powered, 100m range, internal or external use.

Code	Description
WIR305W	2 Ch Key Pad (White)
WIR305B	2 Ch Key Pad (Black)

**Battery
Powered**



4 or 1ch receivers for keypads & receivers. 4Ch includes front panel buttons to control 4 separate relays. Latch or non-latchable, volt free outputs, 1A 30V DC load.

Code	Description
WIR401	1 Ch RX
WIR404B	4 Ch RX (Blk)
WIR404W	4 Ch RX (Wht)

**Volt Free
output**

Order Code: HRM100



1Ch OPTO Isolating Relay

Tiny 1ch NO/NC opto isolating relay with selectable 0 or 12v trigger voltage. Use it with RoboPlate ANPR camera to trigger the opening of a gate, unlocking a door or sounding an alarm.

Order Code	Description
HRM100	1 Ch Opto Relay

OPTO
isolated
input
to output

Order Code:
HRM250

Handy 10 Function Relay

This versatile relay module has 2 independent timers so it can be set up to switch the relay contacts on and off in a variety of ways. It has 10 delay, loop & continuous functions and a timer adjustable from 0.005s up to 270hrs.

Order Code	Description
HRM250	10 Function Relay

Rascal



Order Code: HRM200

Handy Delay On-Off Relay

A mini relay module that can either open or close contacts at a 1-20 second adjustable delay. Handy for opening a door after a delay when a number plate match is detected on a RoboPlate ANPR camera.

Order Code	Description
HRM200	Delay On-Off Relay

0-20s
Delay

Order Code:
REL019

2Ch Network Relay

2ch LAN Relay with Delay Switch that can be triggered over a LAN via the RoboPlate ANPR software to open access control products such as barriers, gates, bollards. Input 5-24V DC. Load 250V AC or 30V DC, 10A each.

Order Code	Description
REL019	Network Relay

2
Channels



New!

VoiceOFF MP3 Message Player

VoiceOFF
com

Order Code:
VOX400

- Now with Network Connectivity
- Stores & Plays 9999 Sounds
- Auto-Activated with 6 Alarm Inputs
- Built-in Relay
- PC/DVR Control via RS485
- Use as a Talkback Amp with DVRs
- Welcome expected visitors
- Warn of Health & Safety concerns
- Inform about Parking arrangements
- Deter trespassers out of hours

You can site the VOX400 externally and, once triggered by an ANPR match, use it to automatically welcome guests to a business, deter trespassers from private land, or warn visitors to a building site about construction traffic.

This networked message player can deliver up to 9999 sounds or messages to welcome, warn or inform people. We have a range of audio files available for download or create your own!

Watch the video
on this handy
device at:
voiceoff.com



TECHNICAL SPECIFICATION

6 x Alarm Inputs	200mA max
Network Function	(Depending on Volume)
Speaker Output 10W 8 ohms	Wall Mounting Fixing Lugs
Micro SD Card Supplied	Ivory ABS Housing, Rated IP65
MP3 File Compatible	H234 x W188 x D85mm
12V DC 120mA Standby	(Inc. Gland/Speaker)

Order Code	Description
VOX400	Alarm Activated MP3 Message Player

Scheduling
Software also
available

Premium Quality

CAT5e Cables

Antihum.com CAT5e Pro

CAB400

Antihum.com CAT5e Pro External

CAB415

Order Code	Qty
CAB400/450	HD Pro 200M Black/White

Solid
Copper
Core

Antihum.com CAT5e Pro External

CAB410

Order Code	Qty
CAB410/415	External 200M Black/White

Designed
for HD IP
CCTV

CAB425

Antihum.com CAT5e Pro External

CAB420

Order Code	Qty
CAB420/425	Twin 200M Black/White

Unique
Twin
Design

Network Patch Leads

Handy
Van Stock

Order Code	Description
NET905B/W	5m Black/White
NET910B/W	10m Black/White
NET925B/W	25m Black/White
NET950B/W	50m Black/White

Premade
for a
Fast Fit

Connectors

RJ45 Plug

Rapid
Fit®

Order Code	Description
CON830	CAT5 UTP Pk 100
CON835	CAT5 STP Pk 100
CON840	CAT6 UTP Pk 100
CON845	CAT6 STP Pk 100

Easy to
see wire
orderSave
hours on
big jobsContractor's
RapidFit® Tool... cuts & strips cable
then crimps too!

- ✓ Fits RapidFit® RJ45s
- ✓ Great Value
- ✓ Cuts & Strips Cable too
- ✓ Auto Release Handles

Order Code	Description
T00995	RapidFit® Crimp Tool

3-in-1
Tool

Switches

Great
Value!

POE308



POE304



POE508



POE516

Rack Mount
Brackets Included

Order Code	Description
POE304	100Mbps Switch (2Up - 4 Down)
POE308	100Mbps Switch (2Up - 8 Down)
POE508	Gigabit Switch (2Up - 8 Down)
POE516	Gigabit Switch (4Up - 16 Down)

High Load
Capacity

Gigabit

Why not add Recording to Your ANPR CCTV system?



Popular!



- Up to 4K Recording
- 4, 8 or 16ch models
- Easy Set Up
- Remote Monitoring
- Free Phone Apps
- Alexa & Google Integration
- Face & Vehicle Detection
- Record your ANPR video footage



Facial Recognition



Vehicle Detection



Alexa & Google



Cloud Storage



Superb New App

Together with ANPR Cameras and Software, feature-packed ZIP NVRs can be used for simple CCTV installations or more demanding applications such as facial recognition and vehicle detection using the ground-breaking iSENSE "artificial intelligence" firmware.

Zip NVRs with the iSENSE firmware and compatible ANPR IP cameras can automatically detect people, recognise faces and even compare them to a built-in database.

With the iSENSE firmware you can automatically detect vehicles, even distinguish if a car is stationary or moving and trigger events, for example if a car is parked where it shouldn't be, and with iSENSE it's all done automatically. An ANPR Camera can read the number plate and trigger a voice notification or send an alert. iSENSE on the ZIP NVR also makes installation easier with new built-in PRO tools such as the power use on each individual PoE port so you can see the current loading in Watts on your ZIP NVR.

You Tube

Watch the video here on our new YouTube channel "System Q CCTV"



Choose from:

Zip Non-PoE NVR Models

A great solution where you can piggyback on to an existing network and power the cameras locally. Typically good for larger corporate installations with a good network infrastructure.

Code	Description
ZIP104A	Non PoE 4ch NVR 1TB HDD
ZIP108B	Non PoE 8ch NVR 1TB HDD
ZIP116B	Non PoE 16ch NVR 1TB HDD
ZIPSTOR	4 Bay HDD Expander



Zip PoE NVR Models

With a built-in switch the Zip PoE NVR is an excellent choice for standalone CCTV systems that are not on an existing network, as they can power the connected cameras straight from the NVR itself.

Code	Description
ZIP204A	PoE 4ch NVR 1TB HDD
ZIP208B	PoE 8ch NVR 2TB HDD
ZIP216B	PoE 16ch NVR 2TB HDD
ZIP226D	PoE 32ch NVR 4TB HDD



Your **RoboPLATE[®]** questions

Automatic number plate capture

answered by our expert



What is ANPR?

Automatic Number Plate Recognition (or ANPR for short) is technology commonly used by traffic police or car park owners. It's a video camera that reads the number plate of the car and matches it to a built-in database.

Do I need a special camera to capture a number plate?

If all you want to do is 'capture a picture' of a number plate, then 'no' you do not need a special camera, you just need a camera with sufficient resolution to be able to see the plate. If, however, you want to process an image and extract the actual plate as text, then you either need stand-alone software to perform that task, or, a camera with that functionality built in, like a RoboPlate ANPR Camera (pg.8-11).

Where should I fit the camera for best results?

Our eyeball camera has a 6-22mm lens so is suitable for close range installations, our bullet camera has a 5-50mm lens so can be used for both close and longer range. Acceptable results have been achieved at a range of 36m.

What cable should I run out?

The RoboPlate ANPR cameras are IP so should be wired using CAT5 or better. Outdoor cable should be trunked appropriately and/or be of suitable external grade. They may be powered via PoE or a separate 12v supply.

Is there any other equipment I will need?

As the ANPR Cameras are self-contained, no other CCTV equipment is needed, but we offer additional widget, software and products to enhance your ANPR system (pg.14-17).

Where are the images of number plates saved?

A RoboPlate camera can store a small quantity of images onto its internal SD card. PC software may be used to store plate data and full frame images indefinitely. An NVR (or DVR with IP capability) may be used to record the video in a conventional manner but won't have the ability to search or recall plate data.

We have also created an FTP Server (pg.14) for easy management of your plate data.



Top Tip

Always try and capture the number plate from the front of a vehicle as the rear can often be blocked or obscured by other vehicles or accessories such as bike racks or trailers.

Can I warn off or deter an unwanted visitor on my black list?

Yes, if you get a black list match you can set the cameras up to perform a number of tasks such as playing a warning message, triggering a relay that might operate a siren or strobe and using the low cost RegWatch widget (pg.14) you can receive a desktop alert on your PC to warn you. A number of messages for use on the camera can be downloaded FREE here >>



What do I need to be alerted that a match has taken place?

RoboPlate cameras can send emails subject to vehicle detection; you can receive these on a smartphone, tablet or PC. The cameras can also send simple network notifications directly to the RoboPlate Widget software (pg.14).



Top Tip

Remember any footage you capture with your ANPR camera is just like any other personal data and needs comply with the latest Data Protection Regs so don't forget your signage!



Can I add extra lists to the white, grey and black lists for more specific uses?

Yes, the RoboPlate Command Centre software (pg.15-17) allows you to create an unlimited number of additional lists each supporting an unlimited number of individual vehicle records; it is also more flexible with regards to its scheduling.

Can I control the days & times that ANPR alerts will occur?

You can indeed. The ANPR Command Centre software lets you manage additional groups such as staff, contractors, couriers, maintenance, security and more. You can then schedule the weeks, days and times that you wish to detect images for each of these groups.

How do I find out more?

Visit our website at RoboPlate.com (see the QR code below), where you will find more information and our free video explaining all about RoboPlate.

More detailed FAQs about the RoboPlate camera & software range can be found on our dedicated website here>>



3 years in the making, SystemQ brings you an affordable range of ANPR Cameras & Software

Camera 2
Traditional Bullet Design with PowerZoom

ROBOPCZ22

ROBOPMZ50

Camera 1
Unique Eyeball Design with built-in mic

In Stock Now!

1 Acts as a normal IP Camera

2 Reads Number Plates [PLATE02]

3 Compares with Built-in Lists [PLATE02] ✓

4 Instant Notifications

5 Sends Email Alerts

6 Plays Messages/ Audio Files

7 Triggers Devices eg gates, alarms, cameras

8 Number Plate Backup/ Share via FTP

FREE ANPR White Paper
Send a blank email to us for an instant reply.
✉ anpr@RoboPlate.com

YT66BAD
Known
Drive Off

ROBOPLATE

© System Q Ltd Errors & omissions excepted

Installer Details: